

**Ministry of Education and Science of Ukraine  
State University of Trade and Economics  
Faculty of Economics, Management and Psychology**

**INFORMATION PACKAGE**

**European Credit Transfer System (ECTS)**

<b>Field of knowledge</b>	<b>C ‘Social Sciences, Journalism, Information and International Relations’</b>
<b>Speciality</b>	<b>C4 ‘Psychology’</b>
<b>Study programme</b>	<b>‘Psychology’</b>
<b>Academic degree</b>	<b>Bachelor</b>

### 3. Study programme

#### 3.1 Profile of the study programme ‘Psychology’ in speciality C4 ‘Psychology’ Director of the study programme – Associate Professor, Iryna M. Ovdiyenko

<b>1 – GENERAL INFORMATION</b>	
<b>Full name of IHE and structural unit</b>	State University of Trade and Economics; Faculty of Economics, Management and Psychology; Department of Psychology
<b>Academic degree and qualification title in the original</b>	First (Bachelor’s degree) cycle of higher education Qualification – Bachelor in Psychology
<b>Field of knowledge</b>	C Social Sciences, Journalism, Information and International Relations
<b>Speciality</b>	C4 Psychology
<b>Study programme title</b>	Psychology
<b>Restrictions on education forms</b>	No restrictions are in place
<b>Standards conformity</b>	Conforms to the Higher Education Standard of the Ministry of Education and Science of Ukraine (Order No. 565 of 24.04.2019)
<b>Qualification title (degree), programme credits and duration</b>	Bachelor’s degree, single. Study programme credits – 240 ECTS credits. Standard training period: 3 years 10 months
<b>Accreditation</b>	Certificate of Programme Accreditation - 3770, valid until 01.07.2028, issued by the National Agency for Higher Education Quality Assurance
<b>Cycle/Level</b>	NQF of Ukraine – level 6, FQ-EHEA – first cycle, EQF-LLL – level 6
<b>Academic backgrounds</b>	Complete secondary education, Professional Associate Degree (Junior Specialist Degree)
<b>Language(s) of instruction</b>	Ukrainian, English
<b>Study programme duration</b>	Valid till the approval of a new study programme edition
<b>Study programme link</b>	<a href="https://knute.edu.ua/">https://knute.edu.ua/</a>
<b>2 – STUDY PROGRAMME AIM</b>	
Training of highly qualified specialists in the field of organisational and economic psychology, who possess systematic interdisciplinary knowledge and practical skills for analysing, researching and finding solutions to organisational and economic problems, forecasting and modelling human organisational and economic behaviour; applying psycho-diagnostic, psycho-corrective and psychoprophylactic methods.	

<b>3 – STUDY PROGRAMME DESCRIPTION</b>
<b><i>Subject area</i></b>
<p><b><i>Object of learning:</i></b> mental phenomena, their emergence, functioning and development; behaviour, activity, actions; interaction between people in small and large social groups; psychophysiological processes and mechanisms underlying various forms of mental activity.</p> <p><b><i>Aims of training:</i></b> shaping scientific ideas about the nature of the psyche, methods and results of research into mental phenomena; developing the ability to apply psychological knowledge in professional activities.</p> <p><b><i>Theoretical content of the subject area:</i></b> a system of psychological knowledge, basic categories and concepts, patterns, mechanisms, methodological approaches, explanatory principles, and scientific and applied tasks.</p> <p><b><i>Methods, techniques, and technologies:</i></b> methods of theoretical and empirical research, valid, standardised psychodiagnostic techniques, data analysis methods, psychological assistance technologies.</p> <p><b><i>Tools and equipment:</i></b> psychological instruments, computer equipment, modern information and communication technologies</p>
<b><i>Study programme orientation</i></b>
<p>It is a study programme aimed at developing basic competences enabling bachelors to solve scientific and applied tasks related to psychological support for organisational development, enhancing staff potential and professional well-being within an organisation.</p>
<b><i>Study programme and specialization main focus</i></b>
<p>Professional education in psychology. The emphasis is placed on training a psychologist possessing transferable and special competences in the field of modern organisational and economic psychology, HR management, social psychology, personality psychology, professional self-development psychology, and mental health.</p> <p>Keywords: personality, psychological, mental and personal development, socio-psychological competence, psychophysiology, organisational and economic psychology, crisis periods, correctional and training programmes, psychological counselling, professional self-development, psychological health.</p>
<b><i>Programme features</i></b>
<p>The given study programme ensures the ability to solve complex, poorly structured and unstructured tasks in specialised fields of activity, particularly in the economic management of individual business processes aimed at increasing market value.</p> <p>The study programme is aimed at developing transferable and special (professional) competences defined by the higher education standard for the first (Bachelor's) level in the speciality C4 'Psychology'. The programme focuses on integrating knowledge of psychology to ensure effective work in the given field and outlines the prospects for training specialists in psychology with regard to the specific features of the current market for psychological services.</p>
<b>4 - EMPLOYABILITY AND FURTHER LEARNING</b>

<b><i>Employability</i></b>	
<p>Graduates of the given study programme are suitable to hold positions in enterprises and organisations, educational institutions of all levels and types, healthcare institutions, practical psychology centres, social services, and counselling centres. According to the <b>DK 003:2010</b> Classification of occupations, as amended by Order No. 259 of the Ministry of Economic Development and Trade of Ukraine dated 15 February 2019):</p> <p>2445.2 – psychologist,  2445.2 – practical psychologist,  2412.2 – human resources development expert.</p>	
<b><i>Further learning</i></b>	
<p>Possibility to continue education at the second (Master’s degree) level of higher education. Acquisition of additional and supplementary qualifications within the postgraduate education system.</p>	
<b>5 - TRAINING AND ASSESSMENT</b>	
<b><i>Teaching and learning</i></b>	
<p>A balanced combination of classroom activities (lectures and discussions, seminars, practical classes in small groups, independent work with information sources, tutorials), distance learning and independent work based on problem-oriented, interactive learning, self-study.</p>	
<b><i>Assessment</i></b>	
<p>The assessment of students’ learning outcomes is carried out in accordance with ‘The Regulations on Assessment of the SUTE Undergraduate and Postgraduate Students’ Learning Outcomes’ and provides for the following control measures: current and final assessment, certification.</p> <p>The current assessment is carried out during practical/laboratory classes and it is also based on the results of independent work assignments. It suggests assessing students’ theoretical knowledge during seminars and their practical skills acquired while completing laboratory/practical assignments.</p> <p>The final assessment comprises control measures that involve establishing the conformity (measuring, assessing) of the learning outcomes achieved by a student with the requirements of the study programme in terms of the relevant educational component, which is carried out at the university in the form of a credit and an exam. The learning outcomes of SUTE students are assessed on a 100-point scale, where: 60-100 points are the learning outcomes entitling a student to obtain ECTS credits; 0-59 points are unsatisfactory learning outcomes not entitling a student to obtain ECTS credits.</p>	
<b>6 - PROGRAMME COMPETENCES</b>	
<b><i>Integral competence</i></b>	
<p>Ability to solve complex specialised tasks and practical problems in the field of psychology, which involve the application of basic psychological theories and methods and are characterised by complexity and uncertainty of conditions.</p>	
<b><i>Transferable competences (TC)</i></b>	
TC1	Ability to apply knowledge in practical situations.

TC2	Knowledge and understanding of the subject area and understanding of professional activities.
TC3	Skills in using information and communication technologies.
TC4	Ability to learn and acquire modern knowledge.
TC5	Ability to be critical and self-critical.
TC6	Ability to make informed decisions.
TC7	Ability to generate new ideas (creativity).
TC8	Interpersonal skills.
TC9	Ability to work in a team.
TC10	Ability to exercise their rights and responsibilities as members of society, to understand the values of a civil (free democratic) society and the need for its sustainable development, the rule of law, and human and civil rights and freedoms in Ukraine.
TC11	Ability to preserve and enhance moral, cultural, scientific values and achievements of society based on understanding the history and development trends of the subject area, its place in the general system of knowledge about nature and society and in the evolution of society, engineering and technology as well as to use various types and forms of physical activity for active recreation and healthy lifestyle.
TC12	Ability to make decisions and act in accordance with the principle of zero tolerance for corruption and any other manifestations of dishonesty.
<b><i>Special (professional, subject) competences (SC)</i></b>	
SC1	Ability to employ the theoretical framework of psychology.
SC2	Ability to retrospectively analyse domestic and foreign experience in understanding the nature of the emergence, functioning and development of mental phenomena.
SC3	Ability to understand the nature of behaviour, activities and actions (particularly in the context of organising early intervention measures).
SC4	Ability to independently collect and critically process, analyse and summarise psychological information from various sources.
SC5	Ability to use valid and reliable psychodiagnostics tools.
SC6	Ability to independently plan, organise and conduct psychological research.
SC7	Ability to analyse and systematise the obtained findings, articulate reasoned conclusions and recommendations.
SC8	Ability to organise and provide psychological assistance (individual and group, including to those suffering from psychological trauma, particularly as a result of war).
SC9	Ability to raise awareness and carry out psychoprophylactic activities as requested.
SC10	Ability to uphold professional ethics.
SC11	Ability for personal and professional self-improvement, learning and self-development.

<b>7 - PROGRAMME LEARNING OUTCOMES</b>	
LO1	Analyse and explain mental phenomena, identify psychological problems and suggest possible solutions.
LO2	Understand the patterns and characteristics of the development and functioning of mental phenomena in the context of professional tasks.
LO3	Search for information from various sources, including using information and communication technologies, in order to solve professional tasks.
LO4	Justify their standpoint and draw independent conclusions based on the research findings and literary sources analysis.
LO5	Select and employ valid and reliable psychodiagnostics tools (tests, questionnaires, projective techniques, etc.) for psychological research and psychological assistance technologies.
LO6	Define the purpose and objectives of the research, possess the skills of collecting primary material, and adhere to the research procedure.
LO7	Reflect on and critically evaluate the reliability of the results obtained in psychological research, as well as articulate reasoned conclusions.
LO8	Present the findings of their own research orally/in writing to specialist and general audiences.
LO9	Suggest their own solutions to psychological issues and problems encountered while performing professional activities, make and justify their own decisions regarding these solutions (particularly the implementation of early intervention measures).
LO10	Convey thoughts logically and clearly, engage in discussion, defend their viewpoint, and modify their speech to suit the interlocutor's background.
LO11	Develop and implement a counselling plan with regard to the request specifics and the individual characteristics of a client, ensure the efficiency of their own actions (including when working with those suffering from psychological trauma, particularly as a result of war).
LO12	Develop and implement psychoprophylactic and awareness programmes and psychological support measures in the form of lectures, discussions, round tables, games, training sessions, etc., according to customer requirements.
LO13	Interact and communicate with, be understandable to and tolerate people with different cultural backgrounds, genders, or ages.
LO14	Effectively perform various roles in a team while solving professional tasks, including demonstrating leadership qualities.
LO15	Take a responsible approach to professional self-improvement, learning and self-development.
LO16	Know, understand and adhere to the ethical principles of professional activity as a psychologist.
LO17	Demonstrate socially responsible and conscious behaviour, follow humanistic and democratic values in professional and public activities.
LO18	Take effective measures to maintain health (their own and that of others) and, if necessary, determine the content of the supervision request.

## **8 - RESOURCE SUPPORT FOR PROGRAMME IMPLEMENTATION**

### ***Academic staff***

The academic staff are fully compliant with Licensing requirements for carrying out educational activities. To implement the study programme 'Psychology', there are engaged academic staff who possess scientific degrees and/or academic titles, meet the requirements of the current legislation of Ukraine and have a sufficient level of scientific and professional qualifications. Practitioners, representatives of professional associations and foreign partners are also involved in the educational process.

All the academic staff members undergo advanced training and professional development courses every five years.

### ***Facilities***

The facilities are fully compliant with Licensing requirements for carrying out educational activities. For the students' convenience, there is a corporate distance learning system and the 'MIA: Osvita' automated educational process management system. The university boasts modern computer classrooms equipped with specialised software, as well as The Research Centre for Mental Health Issues, which houses a specialised research laboratory of the Department of Psychophysiological and Functional Diagnostics fitted with state-of-the-art equipment: research equipment (electrocardiograph, 3-channel ECG machine, massage chair, stationary bike/ergometer, dynamometer, pressure monitors, the 'Hyst' psychophysiological device), anatomical and physiological models, relaxation resources, and a Smart Library. There have been created all conditions for training students with disabilities. Social and domestic facilities are also available at SUTE.

### ***Informational, teaching and learning materials***

An ECTS Information Package is developed for each study programme at the university. Using their personal 'MIA: Osvita' account, each student can review and create their own individual plan, view the curriculum, the points obtained for each course, and their class schedule. They can also communicate with other participants of the educational process.

Course summaries, outlines, and syllabi, along with assessment criteria for educational components, are available on the corporate distance learning platform.

The university's electronic repository provides full-text access to SUTE scientific and educational literature, qualification work manuscripts and doctoral and postdoctoral theses.

For the students' convenience, the university has developed a Catalogue of Academic Courses, according to which students are entitled to choose elective educational components.

## **9 - ACADEMIC MOBILITY**

### ***National credit mobility***

National credit mobility is implemented within the framework of memoranda of cooperation between SUTE and other higher education institutions (research institutions) of Ukraine in accordance with the law.

***International credit mobility***

The university has signed cooperation agreements between SUTE and foreign higher education institutions, which provide for partnership exchanges and student training under international programmes and projects within the Erasmus+ programme.

***Training of foreign students***

Training of foreign students is carried out in accordance with the current legislation requirements.

### 3.1. List of the study programme components and their logical order

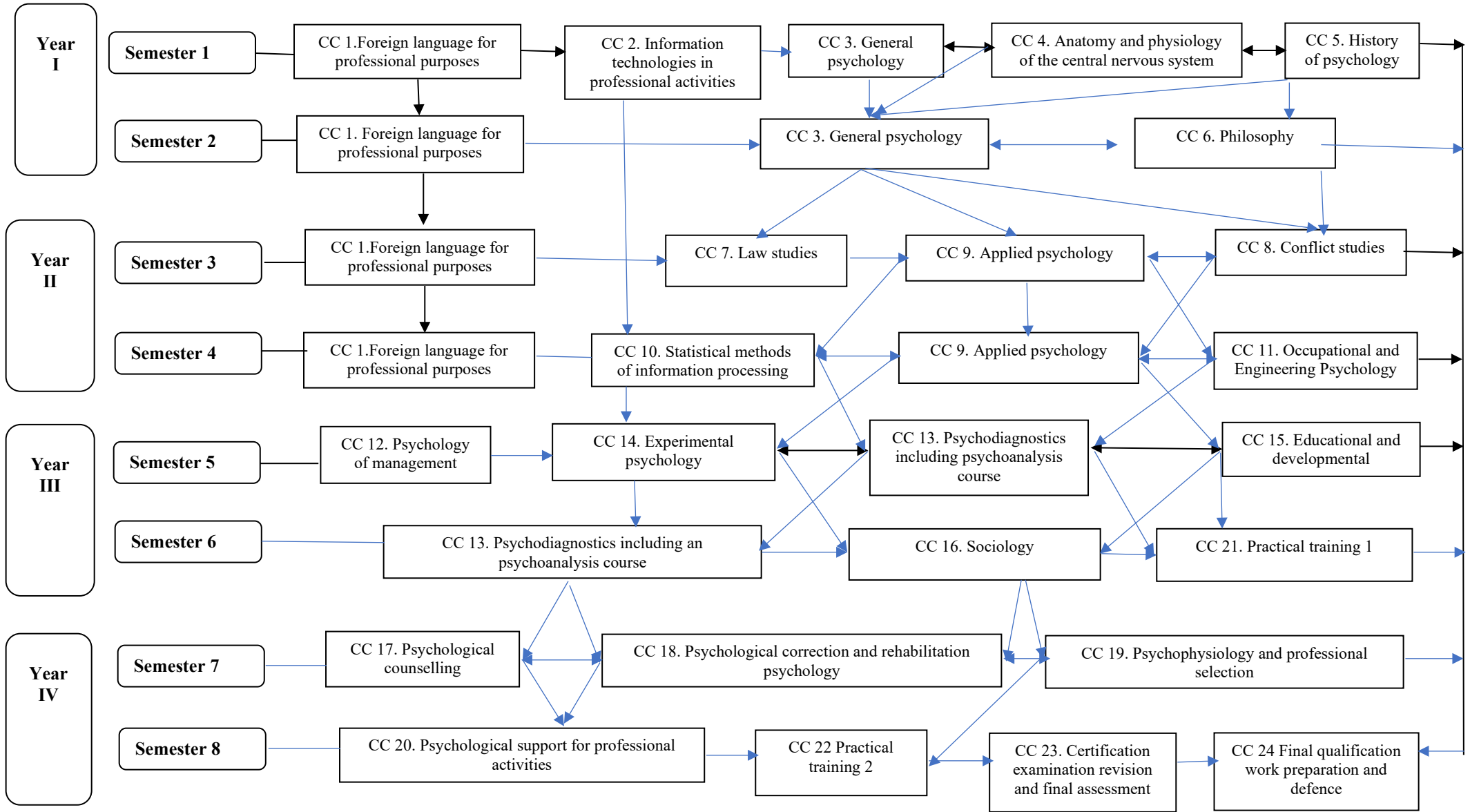
#### 3.1.1. List of the SP components

Code	Programme educational components	ECTS credits	Form of control
<b><i>Compulsory components</i></b>			
CC 1.	Foreign language for professional purposes	24	Examination
CC 2.	Information technologies in professional activities	6	Examination
CC 3.	General psychology	12	Examination
CC 4.	Anatomy and physiology of the central nervous system	6	Examination
CC 5.	History of psychology	6	Examination
CC 6.	Philosophy	6	Examination
CC 7.	Law studies	6	Examination
CC 8.	Conflict studies	6	Examination
CC 9.	Applied psychology	12	Examination
CC 10.	Statistical methods of information processing	6	Examination
CC 11.	Occupational and Engineering Psychology	6	Examination
CC 12.	Psychology of management	6	Examination
CC 13.	Psychodiagnostics including an psychoanalysis course	12	Examination
CC 14.	Experimental psychology	6	Examination
CC 15.	Educational and developmental psychology	6	Examination
CC 16.	Sociology	6	Examination
CC 17.	Psychological counselling	6	Examination
CC 18.	Psychological correction and rehabilitation psychology	6	Examination
CC 19.	Psychophysiology and professional selection	6	Examination
CC 20.	Psychological support for professional activities	9	Examination
CC 21.	Practical training 1	6	Credit
CC 22.	Practical training 2	6	Credit
CC 23.	Certification examination revision and final assessment	3	Certification examination
CC 24.	Final qualification work preparation and defence	6	Defence
<b>Total credits for compulsory components</b>		<b>180</b>	
<b><i>Elective components</i></b>			
EC 1.	Educational component 1	6	Examination
EC 2.	Educational component 2	6	Examination
EC 3.	Educational component 3	6	Examination
EC 4.	Educational component 4	6	Examination
EC 5.	Educational component 5	6	Examination
EC 6.	Educational component 6	6	Examination

EC 7.	Educational component 7	6	Examination
EC 8.	Educational component 8	6	Examination
EC 9.	Educational component 9	6	Examination
EC 10	Educational component 10	6	Examination
<b>Total credits for elective components</b>		<b>60</b>	
<b>TOTAL CREDITS FOR THE STUDY PROGRAMME</b>		<b>240</b>	

Students choose elective courses through their personal accounts on the ‘MIA: Osvita’ portal. The academic course descriptions and prerequisites are provided in the SUTE Catalogue of Academic Courses.

### 3.2.2. The SP structural and logic network



### **3.4. Students' final assessment**

The final assessment is carried out in the form of both a public defence of a qualification paper and a certification examination. The qualification work should involve solving a complex specialised task or a practical complex assignment or problem in the field of psychology, which requires the application of basic psychological theories and methods, and is characterised by complexity and uncertainty of conditions. The qualification work must not contain academic plagiarism, falsified or copied information. The qualification work must be published on the official website or in the repository of the higher education institution. The certification examination on the speciality is supposed to check on the learning outcomes defined by the Higher Education Standard and the given study programme.

### 3.5. THE PROGRAMME COMPETENCES AND THE SP COMPULSORY COMPONENTS MATRIX

Components / Competences	CC1	CC2	CC3	CC4	CC5	CC6	CC7	CC8	CC9	CC10	CC11	CC12	CC13	CC14	CC15	CC16	CC17	CC18	CC19	CC20	CC21	CC22	CC23	CC24
TC1			+	+				+	+		+		+	+	+	+	+	+	+	+	+	+	+	+
TC2			+					+	+		+		+	+	+		+	+	+	+	+	+	+	+
TC3	+	+	+					+		+			+							+			+	+
TC4				+	+							+	+		+									
TC5					+	+						+				+					+	+	+	+
TC6							+						+		+				+		+	+	+	+
TC7	+	+			+		+								+	+							+	
TC8			+		+	+	+	+											+		+	+		
TC9	+	+	+					+	+		+			+			+	+			+	+	+	
TC10						+						+				+					+			
TC11					+										+	+					+	+	+	+
TC12					+				+				+											+
SC1			+	+				+	+		+		+	+	+	+	+	+	+	+	+	+	+	+
SC2				+		+		+	+		+		+	+		+					+	+	+	+
SC3	+	+	+					+							+						+	+	+	+
SC4	+	+							+		+		+	+			+	+	+		+	+	+	+
SC5				+					+	+	+		+	+		+	+	+	+	+	+	+	+	+
SC6			+	+				+		+			+			+			+	+	+	+	+	+
SC7			+			+		+		+			+		+				+		+	+	+	+
SC8											+				+		+			+	+	+	+	+
SC9	+	+													+						+	+	+	+
SC10			+		+			+	+		+		+	+			+	+	+	+	+	+	+	+
SC11			+									+	+		+	+	+				+	+	+	+

### 3.6. THE PROGRAMME LEARNING OUTCOMES AND THE SP COMPULSORY COMPONENTS MATRIX

Components/ Programme learning outcomes	CC1	CC2	CC3	CC4	CC5	CC6	CC7	CC8	CC9	CC10	CC11	CC12	CC13	CC14	CC15	CC16	CC17	CC18	CC19	CC20	CC21	CC22	CC23	CC24
PO1			+	+				+	+		+		+	+		+	+		+	+	+	+	+	+
PO2			+					+	+				+						+		+	+	+	+
PO3	+	+			+	+	+			+		+	+							+	+	+	+	+
PO4	+					+	+					+	+	+			+				+	+	+	+
PO5				+		+			+	+			+								+	+	+	+
PO6		+			+	+	+					+	+				+				+	+	+	+
PO7		+						+			+		+	+	+	+	+				+	+	+	+
PO8			+					+	+		+		+	+		+	+		+		+	+	+	+
PO9			+					+	+		+		+	+		+		+	+	+	+	+	+	+
PO10	+		+	+	+				+		+		+			+	+		+		+	+	+	+
PO11																					+	+	+	+
PO12															+		+				+	+	+	+
PO13			+	+	+			+	+		+			+	+	+			+		+	+	+	+
PO14														+			+				+	+	+	+
PO15			+	+					+				+	+	+				+		+	+	+	+
PO16					+						+		+			+					+	+	+	+
PO17			+						+		+		+		+	+			+	+	+	+	+	+
PO18								+								+	+				+	+	+	+

## LIST OF RECOMMENDED ELECTIVE COMPONENTS

<b>Code</b>	<b>Educational components</b>	<b>ECTS credits</b>
<b>EC 1.</b>	Life safety	<b>6</b>
<b>EC 2.</b>	Public speaking	<b>6</b>
<b>EC 3.</b>	Political psychology	<b>6</b>
<b>EC 4.</b>	Psychology of trade	<b>6</b>
<b>EC 5.</b>	Psychology of advertising	<b>6</b>
<b>EC 6.</b>	Family psychology	<b>6</b>
<b>EC 7.</b>	Leadership and career psychology	<b>6</b>
<b>EC 8.</b>	Psychology of personality crisis periods	<b>6</b>
<b>EC 9.</b>	Psychological service	<b>6</b>
<b>EC 10.</b>	Image psychology	<b>6</b>
<b>EC 11.</b>	Psychology of stress resistance and personal growth	<b>6</b>
<b>EC 12.</b>	Psychology of personal safety	<b>6</b>
<b>EC 13.</b>	Psychiatry and pathopsychology	<b>6</b>
<b>EC 14.</b>	Social psychology including an ethnopsychology course	<b>6</b>
<b>EC 15.</b>	Communication English tailored course	<b>6</b>